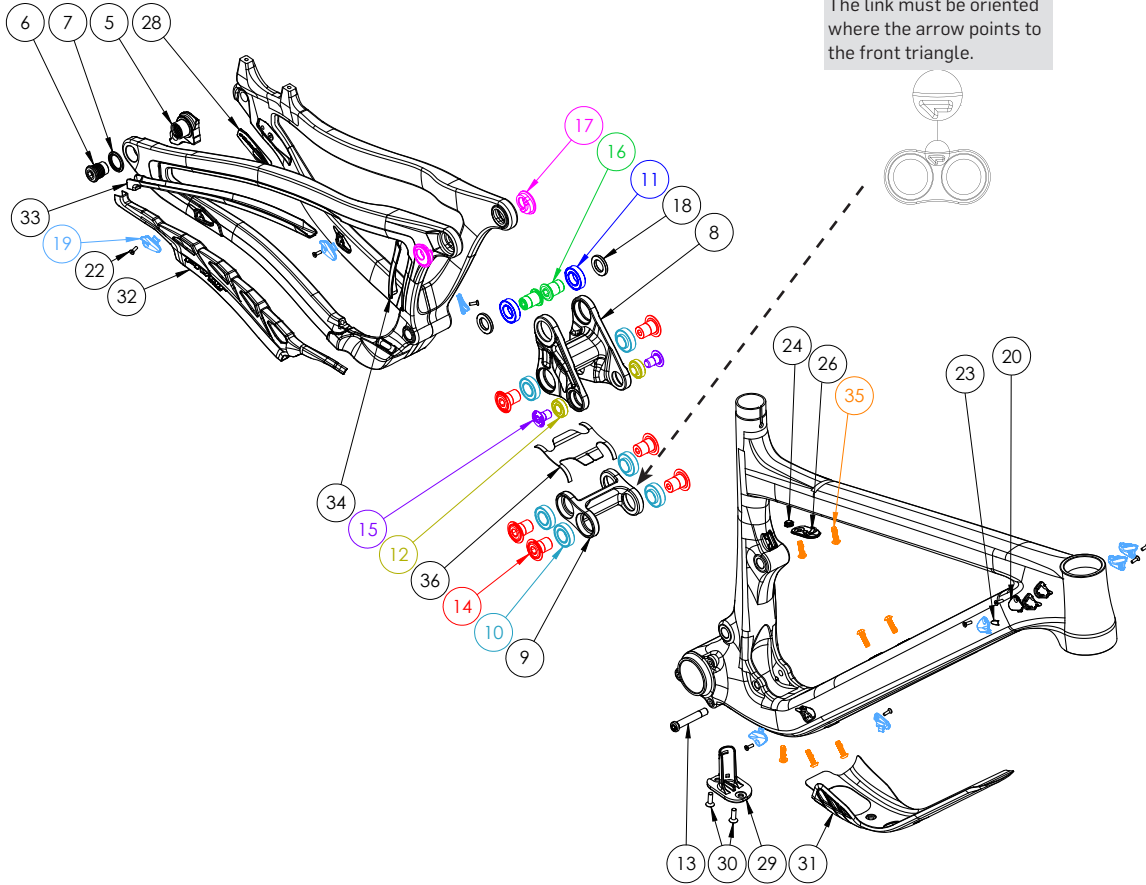


SWITCHBLADE GEN 2 (UDH)



ATTENTION: Lower links are marked with an arrow on the non-drive side. The link must be oriented where the arrow points to the front triangle.

HARDWARE				
NUMBER	PART NUMBER	DESCRIPTION	TORQUE	*
5	FP-UDH-TA-I2MM-BLK-VI-RI	UNIVERSAL REAR DERAILLEUR HANGER		
6	-	UNIVERSAL REAR DERAILLEUR HANGER BOLT	25 NM (18 LB-FT)	
7	-	UNIVERSAL REAR DERAILLEUR HANGER WASHER		
8	FP-LNK-UL-72MM-VI-RI	72MM UPPER LINK		
9	FP-LNK-LL-35MM-EXT-RI	35MM OUT-TO-OUT EXTENDED LOWER LINK		
10	FP-BRG-6902-LLUMAXEON	28MM 6902 EXTENDED MAX-E BEARING		R
11	FP-BRG-6902-LLUMAX	28MM 6902 STANDARD MAX BEARING		R
12	FP-BRG-6900-LLUMAXE	22MM 6900 EXT'D MAX-E BEARING		R
13	FP-BLT-M8*45.7-BLK-V2	M8 FRONT SHOCK BOLT FOR 30.1MM SHOCK SPACING	13 NM (10 LB-FT)	G / L
14	FP-BLT-MI4*20-BLK-V2-R2	MI4X20 LINK BOLT	35 NM (27 LB-FT)	L
15	FP-BLT-MI0*16.5-BLK-VI	M10 TRUNNION MOUNT BOLT	13 NM (10 LB-FT)	L
16	FP-BLT-MI4*20-BLK-V3-R2	MI4X20 FLIP CHIP BOLT	35 NM (27 LB-FT)	L
17	FP-NUT-FLIPCHIP-4.6MM-VI	4.6MM FLIP CHIP		G
18	FP-WSH-SPC-I5I*250*3W	MI4X3MM FLIP CHIP SPACER		G
19	FP-CLM-MECH-FRM-VI	INTERNAL ROUTING CABLE CLAMP		
20	FP-CVR-MECH-FRM-V2	INTERNAL ROUTING HOLE COVER		
21	FP-CLM-DUAL-FRM-VI	INTERNAL ROUTING DUAL CLAMP		
22	FP-SCW-FLT-M3*10	M3X10 CABLE CLAMP SCREW (INCLUDED W/ CLAMP)		
23	FP-CVR-CLAMP-SPACER-VI-RI	CABLE PORT RUBBER SHIM		
24	FP-PLG-DI2-7*8*2.5	7X8MM DI2 PLUG		
25	FP-GDE-DI2-7*8*2.5*2.5	7X8MM DI2 WIRE GUIDE		
26	FP-CVR-FLV-TT-VI-R2	FOX LIVE COVER PLATE (PIVOT WB BOLT V2 TO MOUNT)		
27	FP-WSH-FLV-CNTRLMT-VI-RI	FOX LIVE CONTROLLER MOUNT SPACER		
28	FP-CVR-FLV-ACC-VI-RI	FOX LIVE ACCELEROMETER COVER		
29	FP-CVR-DI2-DT-VI	DI2 DOWNTUBE BATTERY HOLDER		
30	FP-SCW-FLT-M5*16	M5X16 DI2 DT BATTERY COVER SCREWS (INCLUDED WITH COVER)		
31	FP-PRO-SBCV2-DT-XS-S-VI-RI	SWITCHBLADE V2 DOWNTUBE PROTECTOR (XS/SM)		
31	FP-PRO-SBCV2-DT-M-L-XL-VI-RI	SWITCHBLADE V2 DOWNTUBE PROTECTOR (MD/LG/XL)		
32	FP-PRO-SBCV5-CS-VI-RI	SWITCHBLADE V2 CHAINSTAY PROTECTOR		
33	FP-PRO-SBCV5-SS-VI-RI	SWITCHBLADE V2 SEATSTAY PROTECTOR		
34	FP-PRO-SBCV5-UR-VI-RI	SWITCHBLADE V2 UPRIGHT PROTECTOR		
35	PIVOT WB BOLTS V2	M5X0.8X18 ZINC PLATED STEEL WATER BOTTLE BOLTS		
36	FP-PRO-34MM-EXT-LL-V2-RI	34MM OUT TO OUT EXTENDED LOWER LINK PROTECTOR		

AXLES	PART NUMBER	DESCRIPTION	TORQUE	*
-	I57MM THROUGH AXLE V5	I57MM UDH REAR AXLE	15 NM (11 LB-FT)	G
-		I2MM AXLE WASHER (INCLUDED W/ AXLE)		

BIKE CARE				
*	PRODUCT TYPE	RECOMMENDED PRODUCT		
G	GREASE	MOTOREX BIKE GREASE 2000		
L	THREAD LOCKER**	LOCTITE THREAD LOCKER #243 (OR EQUIVALENT)		
G/L	GREASE (BOLT SHAFT) / THREAD LOCKER (BOLT THREADS)	SEE ABOVE		
A	ANTI-SEIZE	MOTOREX COPPER PASTE		
Y	LIGHT DUTY THREAD LOCKER	LOCTITE THREAD LOCKER #222 (OR EQUIVALENT)		
R	RETAINING COMPOUND	LOCTITE RETAINING COMPOUND #620 (OR EQUIVALENT)		

**THREADLOCKER SHOULD ALWAYS BE APPLIED TO THE CORRESPONDING FEMALE THREADS FOR THE BOLT SPECIFIED

